

## **Dwarf Foraminifera Off Kerala, India: A Response To Mudbank Formation**

**Rupal Dubey<sup>1\*</sup>, Rajeev Saraswat<sup>1</sup>, Dineshkumar P. K.<sup>2</sup> And Rajiv Nigam<sup>1</sup>**

<sup>1</sup>csir-National Institute Of Oceanography, Dona Paula 403004, Goa, India

<sup>2</sup>csir-National Institute Of Oceanography, Regional Centre- Cochin 682018, Kerala, India

\*Corresponding Author (Email: RdrupalDubey1@Gmail.Com; Rdubey@Nio.Org)

### **Abstract**

During the monsoon season, a mudbank forms off Alleppey, a coastal district in Kerala. The mudbank forms in the littoral waters within 15 m water depth. It is a small coastal zone with water being unaffected by monsoon waves' roughness. The coastline is protected from the monsoon wave erosion in mudbank area. Apart, from the peculiar calmness, the water column in mudbank has very high suspended sediments. With these unique settings, mudbank defines a peculiar marginal marine environment having rich fish catch and is the source of livelihood for fishermen in Kerala during the lean fishing period of monsoon. Here, we have studied the effect of mudbank formation on benthic foraminiferal morphology. The surface sediment samples from the area were analyzed for foraminifera. The maximum diameter/length/width of foraminiferal species present in the mudbank were compared with the type species. The maximum diameter/length/width of all the living benthic foraminiferal species in the mudbank was smaller than the type species. Additionally, foraminiferal abundance in the mudbank was also poor, suggesting stressed environment. We, therefore conclude that dwarfism is a peculiar response of foraminifera to mudbank formation. The reduced foraminiferal test size can thus, be used as a tool to identify the previous mudbanks and also the spatial shift of mudbanks.

**Keywords:** Living benthic foraminifera, dwarfism, mudbank, Alleppey

## Introduction

In the south-eastern Arabian Sea off Alleppey, Kerala, India, the coastal water within 15-20 m water depth witness the formation of mudbank, during monsoon season. Mudbank is the highly turbid part of the coastal water due to re-suspension of bottom mud (Kurup 1977, Silas 1984, Mallik *et al.*, 1988, Tatavarti *et al.*, 1999) and is devoid of turbulent wave activity during rough monsoon season (Mathew *et al.*, 1995, Jiang and Mehta 1996, Tatavarti and Narayana 2006, Narayana *et al.*, 2008). The suppressed wave activity reduces coastal erosion in the mudbank area (Narayana *et al.* 2001). Even though the lateral extent of mudbank is variable, it is 3 to 4 km along and 8 to 10 km across the shoreline (Gopinathan and Qasim 1974, Mallik *et al.*, 1988, Li and Parchure 1998, Balachandran 2004, Narayana *et al.*, 2008). Damodaran (1973) described mudbanks as 'smooth water tracts' due to its peculiar calmness during monsoon. The calm coastal water makes these stretches a safe harbor for sea trawlers (Silas 1984). The rough sea during monsoon prevents fishing at other coastal locations along the south-west coast of India, especially Kerala. In view of the seasonal re-suspension of bottom mud, increase in suspended particulate matter in the water column (Shynu *et al.*, 2017), low bottom water salinity (Murthy *et al.*, 1984, Muraleedharan *et al.*, 2017) and peculiar primary productivity pattern (Nair *et al.*, 1984), mudbank defines unique micro-environment.

The extremely rich fishery potential is an inseparable aspect of the mudbank area due to its tranquillity. It makes the phenomenon of mudbank socio-economically significant. The Central Marine Fisheries Research Institute (CMFRI) recorded 2011 kg (per landing center per day) of fish-catch from the Alleppey mudbank area and 356 kg (per landing center per day) from the non-mudbank area in 1965. Subsequently, the fish-catch in 1966 from the same regions was 10907 kg (per landing center per day) and 306 kg (per landing center per day), respectively (Rao 1967). The fishing activity is banned along the entire Kerala coast during the monsoon season. As a consequence, average monthly fish landing drops down to 7.5 – 25 thousand tonnes in the monsoon season, from 25 – 61 thousand tonnes in non-monsoon months. However, on considering the fish landing from the mudbank area, the monsoon fish landing increases to 13 – 35 thousand tonnes (Gopinathan and Qasim 1974). In another study, the annual fish landing from the Alleppey mudbank region between 1966 and 1973, was recorded as 982.57 – 10425.21 metric tonnes; while the same from non-mudbank areas during monsoon season, was significantly low (369.98 – 6432.63 metric tonnes) (Ragunathan *et al.*, 1984). Kerala contributes 22.32% of India's marine fish landings. The indigenous marine fishing sector employs approximately 6 lakh people directly and indirectly. The overall loss in labor income is approximately Rs. 66 crores during the ban period (Ashwathy and Sathiadhas 2006). In such crisis period, the mudbank areas along the Kerala coast are boon to the fishermen community. The cheap

non-motorised (thermocool rafts) fishing crafts, which a poor fisherman can afford, were operated the most in mudbank fishing season of 2014 and 2015. Kerala marine fishing sector contributed 17.5 % LC (at Landing Centre level) and 15.8 % RC (at Retail Centre level) of the national marine fish landing valuation in 2014. The Punnapra fish landing point of Alleppey mudbank area contributed 1.6 % and 0.88 % of the total marine valuation in 2014 and 2015 respectively (Shyam *et al.*, 2016). Owing to the fisheries output that directly governs regional economics and subsequently impacts national marine valuation, efforts were made to study the various scientific aspects of mudbank. Different hypotheses were put forward to explain the cause(s) of re-suspension of bottom mud to understand the origin of mudbank (Kurup and Varadachari 1975, Murthy *et al.*, 1984, Balachandran 2004, Nayarana *et al.*, 2008, Loveson *et al.*, 2016).

The unique environment in the mudbank region is expected to affect marine biota as well. Benthic foraminifera are a significant biogenic component of the marine ecosystem. They have wide range of occurrence from shallow coastal water to deep sea. Foraminifera are sensitive to changes in their surroundings and are often used to identify micro-environments (Boltovskoy and Wright 1976, Setty and Nigam 1980, Murray 1991, Sen Gupta 1999, Saraswat and Nigam 2013, Saraswat, 2015). The traditional study of benthic foraminifera systematics and bathymetric distribution from off Kerala (Travancore coast) was carried out for the first time by Sethulakshmi (1958). Later, Antony (1968) studied the zonal distribution and abundance of living and dead benthic foraminifera from off Kannur to Vizhinjam (off Kerala). Seibold (1975) provided a detailed taxonomy of lagoonal and near coast benthic foraminifera from Cochin. A comparison of the living and dead foraminifera from the deeper offshore water off Cochin and from the peculiar habitat of Cochin bar mouth mudbank was attempted by Seibold and Seibold (1981). Nisha and Singh (2012) studied the response of benthic foraminifera to different physio-chemical parameters from the shelf and outer slope region off the southwest coast, ranging from 50 -200 m water depth, along with establishing a link between faunal abundance, sediment-size, and organic carbon content.

However, a comprehensive study, focused on Alleppey mudbank region with an objective to understand the benthic foraminiferal response to the seasonal occurrence of mudbank and relate it to the cause of mudbank formation, has not yet been attempted. Keeping the above objectives in mind, a seasonal sampling was done in the mudbank area off Alleppey and living benthic foraminifera were studied to get in situ information that can help to trace the cause of mudbank formation in the region. An attempt is made to relate the faunal response, with the probable hypothesis, proposed for the origin of mudbank.

## Geological Setting

The outcrops in Kerala comprises of Precambrian crystalline rocks, Tertiary sedimentary formations and sub-recent to recent laterite, sandy and peat deposits. The major tectonic activity, featuring high-grade metamorphism and formation of the depositional basin, is of the Precambrian and Tertiary. The coast line along Kerala is 560 km long with the Arabian Sea on its west and the Western Ghats on the eastern side. The Vembanad Lake is another geomorphic feature in Kerala. It is the largest wetland system of south India and extends from Cochin in the north to Alleppey in the south (Varadarajan and Nair 1978, National Wetland Atlas Kerala 2010, Ramakrishnan and Vaidyanandhan 2010, Soman 2013). The rivers/streams in the area are seasonal and originate from the Western Ghats. The rivers draining northern and southern regions of Kerala debouch into the Arabian Sea. The rivers draining the central Kerala region discharge into the Vembanad Lake. The geological history of the shoreline suggests that mudbank area off Alleppey was a part of a bay from which the lake and present-day shoreline has evolved (Padmalal *et al.*, 2014a, 2014b).

## Materials And Methods

The area covered in this study is 53.28 km<sup>2</sup>, lying between 9.48 to 9.36 °N latitude and 76.32 to 76.28 °E longitude, within 15 m water depth. The surface sediment samples and water samples were collected along four latitudinal transects spaced at 0.04°. Station 1 and 2 (transact I), called as northern peripheral stations (NPS) lie north of mudbank area. Station 3 and 4 (transact II) lie in the mudbank area and are referred as core mudbank stations (CS). Stations 5 to 8 (transact III and IV) lie south of mudbank and are referred as south peripheral stations (SPS) (Fig. 1 and Table 1). In all, 24 grab sediment samples were collected, 8 each in pre-monsoon, monsoon and post-monsoon season by using *Santa Cruz* trawler. During each sampling, top sediment was immediately preserved in buffered Rose-Bengal and ethanol solution. After a minimum staining period of two weeks, sediments were processed following the standard procedure for foraminiferal study (Manasa *et al.* 2016). The sediments were soaked in filtered sea-water for 12 hours. The overlying sea water was then decanted to remove ethanol. The sediments were then freeze-dried in a lyophilizer. The freeze-dried sediments were weighed and then soaked for 24 hours. Subsequently, the sediments were wet sieved by using 63 µm sieve, with a gentle shower. The coarse fraction (>63 µm) retained on the sieve was oven dried and weighed.

A minimum of 300 living benthic foraminifera specimens were picked from weighed aliquots, obtained by coning and quartering. In samples where 300 living specimens were not available, the entire coarse fraction was used to pick all the stained specimens. The doubtful specimens were transferred to a petridish filled with water and examined under the microscope on a white base, to

ascertain the living status of foraminifera. The specimens exhibiting a wholesome mass of pink color, either shrunk to the proloculus (in juvenile forms) or evenly distributed in the entire shell (in adult forms) were considered as living.

The absolute abundance of total living foraminifera (TLN) was calculated for each sample. The value was normalized for 10 g of sediment in each case (Table 1). To ascertain the dwarf character of fauna, size (diameter/length/width) of the largest specimen of each species from every station for all three seasons (24 samples) was measured under a calibrated stereo-zoom microscope (Table 3).

Seabird SBE 19 plus conductivity-temperature-depth (CTD) profiler was used to record water column temperature and salinity with a depth bin of 0.2 m. The instrument was well calibrated and had a measuring range for conductivity 0-9 S/m (accuracy of  $\pm 0.0005$  S/m), for temperature -5.0 to 35.0 °C ( $\pm 0.005$  °C) and 0.1% of full scale for a pressure rating of 100 m depth. The CTD profiler malfunction limited the pre-monsoon measurements (Table 2). A Niskin water sampler was used to collect water samples. The water samples were fixed on board with Winkler A and B solutions for dissolved oxygen (DO) analysis. The DO analysis was carried out in the chemical laboratory of the National Institute of Oceanography, Regional Centre, Cochin.

## Results

The absolute abundance of living benthic foraminifera (TLN) at CS, NPS and SPS during pre-monsoon, monsoon and the post-monsoon season was used to understand spatial variation in benthic foraminifera during different seasons.

**Spatial variation in absolute abundance:** In the core mudbank region, TLN ranges from 22 to 29 during pre-monsoon, from 19 to 28 during monsoon and from 18 to 27 during the post-monsoon season (Fig. 2). Benthic foraminiferal abundance is higher in northern peripheral mudbank stations NPS as compared to that in CS, during all three seasons. The TLN in NPS varies from 231 to 454 in pre-monsoon, from 59 to 100 in monsoon and from 8 to 61 in the post-monsoon season (Fig. 2). The highest living benthic foraminiferal abundance was reported in southern peripheral mudbank stations. The TLN ranges from 57 to 709 in pre-monsoon, from 77 to 1214 in monsoon and from 91 to 616 in the post-monsoon season (Fig. 2).

**Dwarf character of fauna:** A total of 19 species of living benthic foraminifera were reported from the mudbank area off Alleppey. These are: (1) *Ammobaculites dilatatus* (Cushman and Bronnimann 1948); (2) *Ammobaculites exiguus* (Cushman and Bronnimann 1948); (3) *Nouria polymorphinoides* (Heron-Allen and Earland 1914); (4) *Asterorotalia dentata* (Parker and Jones 1865); (5) *Brizalina limbata* (Brady); (6) *Brizalina ordinaria* (Phleger and Parker 1954); (7) *Brizalina striatula* (Cushman

1922); (8) *Siphogenerina virgula* (Brady); (9) *Cancris auricula* (Fichtel and Moll); (10) *Cancris carinatus* (Millet 1904); (11) *Nonion belridgense* (Barbat and Johnson 1934); (12) *Nonion scapha* (Fichtel and Moll) Cushman 1939; (13) *Protelphidium* cf. *schmitti* (Cushman and Wickenden 1929); (14) *Pararotalia* cf. *globosa* (Millet 1903); (15) *Ammonia sobrina* (Schupack 1934); (16) *Ammonia tepida* (Cushman 1926); (17) *Cribrononion somaense* (Takayanagi 1955); (18) *Elphidium excavatum* (Cushman 1930) and (19) *Florilus(?) tobagoensis* (McCulloch 1981) (Plate 1 and 2). The size of all these species was measured and compared with type species. In case of *Asterorotalia dentata* (Parker and Jones 1865) and *Brizalina limbata* (Brady), as the dimension of type species was not available in the catalogue, a comparison was done with topotype. All the above-mentioned species in the mudbank area are invariably smaller than their type specimens (Table 3).

## Discussion

The absolute abundance of living benthic foraminifera varies between core mudbank (CS) and peripheral mudbank (NPS and SPS) regions. The CS has the lowest range of faunal abundance, irrespective of the season. The highest range of benthic foraminiferal abundance is in SPS and intermediate in NPS (CS<NPS<SPS). The mudbank formation is associated with re-suspension of bottom sediments (Tatavarti *et al.*, 1999) resulting in high concentration of suspended particulate matter in the bottom water (Narayana *et al.*, 2008; Shynu *et al.*, 2017). The poor abundance in CS suggests that the increased suspended matter driven turbidity in the mudbank region adversely affects benthic foraminifera. A comparatively lower benthic foraminiferal abundance in the CS, even during the post-monsoon season, further indicates that the stable substrate condition, favorable for faunal growth, does not reinstate even in non-monsoon months. Thus, it can be said that the core mudbank region must be getting affected over consecutive seasons. On the other hand, large seasonal change in TLN is observed in both the northern and southern peripheral stations. The decrease in TLN from pre-monsoon to monsoon season in NPS confirms the northwards proliferating effect of mudbank, which in turn affects the living population of benthic foraminifera. With the withdrawal of monsoon and onset of the post-monsoon season, TLN in the northern peripheral region does not show an appreciable increase, indicating longer duration required for complete restoration of the substrate. In the southern region, TLN decreases at shallower stations of transect III and IV from pre-monsoon to monsoon, suggesting the minor influence of mudbank extending in shallower depths, south of core mudbank area. Interestingly, TLN in the SPS decreases at deeper stations of transect II and IV from monsoon to post-monsoon. In contrast to that, the TLN increases at shallower stations, with the withdrawal of mudbank effect from this region. Thus, it can be inferred that shallower stations remain under mudbank influence whereas deeper stations of southern region are under the effect of monsoon. The lower faunal

abundance in the northern region, as compared to the southern region and continued lower abundance at shallow stations in post-monsoon season, that is the withdrawal phase of mudbank, indicates that north of core mudbank region is more affected than south.

The bottom water salinity in CS during monsoon, ranges from 24.4 to 26.9 psu. The salinity in NPS varies from 34.2 to 34.6 psu and in SPS from 34.6 to 34.8 psu. During non-monsoon season, the salinity in CS ranges from 26.7 to 31.9 psu, in NPS it is 33.8 psu and in SPS, the range of salinity is from 33.9 to 34.0 psu. The core mudbank region has the lowest salinity (Held *et al.*, 2014) as compared to the peripheral regions. The salinity measurements are in agreement with that from the Alleppey mudbank in the year 1971-1972 (Murthy *et al.*, 1984). Apart from the disturbed bottom mud, the low bottom water salinity, further adds to the stressed benthic environment and collectively form the cause of poor faunal abundance in the core mudbank area (Nigam *et al.* 2006; 2008; Kurtarkar *et al.* 2011). The DO measurements of the bottom water show the seasonal change between monsoon and non-monsoon months. But no significant spatial change is observed between CS, NPS and SPS in any season. It ranges from 0.2 to 0.6 mg/l in monsoon season and 4.6 to 5.9 mg/l in non-monsoon season.

A peculiar feature observed in the mudbank fauna of Alleppey is their relatively smaller test size (Seibold and Seibold 1981) which is considered as a dwarf character of foraminifera (Boltovskoy and Wright 1976). The invariably smaller test size (Table 3), is the result of stressful environment, under which the organism has reduced metabolism and thus develop smaller tests and reduce reproduction (Boltovskoy and Wright 1976 Nigam *et al.* 2006; 2008; Kurtarkar *et al.* 2011). In case of mudbank area, the ideal living conditions of foraminifera are interrupted, as is well depicted by dwarfism of the fauna. The presence of dwarf fauna in the entire mudbank area can be explained in light of marginal effect in the peripheral regions (i.e., towards north and south), the extent of which vary in every season.

Thus, it can be inferred that Alleppey mudbank area represents a typical marginal marine ecosystem where bottom water salinity is low and bottom mud remains unstable which modulates species-specific response in foraminifera exhibited as dwarfism and poor abundance. The bottom water DO does not show any spatial variation in any season and seems not to be a key factor in characterizing stressful environment of the core mud bank region. However, the area becomes more interesting owing to low bottom water salinity in the absence of any river/stream in Alleppey. Earlier, Loveson *et al.* (2016) suggested a subterraneous flow from a nearby lake to the nearshore region, through sub-surface paleo-channels to be the cause of mudbank formation off Alleppey. This may also qualify as the reason for low bottom water salinity and disturbed bottom mud.

## Conclusions

We report that the living benthic foraminifera adapts to the stressful environment of mudbank by reducing their metabolism and proliferating as dwarf forms. The stressed benthic environment is also evident from an extremely poor foraminiferal abundance. The faunal response suggests that the anomaly in benthic environment of Alleppey mudbank originates in core mudbank area (CS) and proliferates northwards (NPS) and to a shallower depth in the south (SPS). The disturbance of muddy bottom layer and low bottom water salinity constitute the prime environmental stress factors in the mudbank area. Based upon the localised faunal response, low bottom water salinity and absence of river/streams in Alleppey, it can be said, that out of various hypotheses proposed to explain the cause of re-suspension of bottom mud leading to the formation of mudbank, the subterraneous flow hypothesis seems to be the most plausible cause of mudbank formation off Alleppey.

## Acknowledgements

The financial support from the Ministry of Earth Sciences (MoES), Council of Scientific and Industrial Research (CSIR) and University Grants Commission (UGC-NET JRF/SRF to RD) is highly acknowledged. We are thankful to Dr. K. K. Balachandran, Dr. Gireesh Kumar, Dr. Kusum and Naveen Kumar for their help during sampling and collection of environmental data. We are also thankful to Dr. S. W. A. Naqvi for his suggestions and guidance.

## References

- Antony, A.** 1968. Studies on the shelf water foraminifera of the Kerala coast. *Bulletin of Department of Marine Biological Oceanography*. University of Kerala, **4**: 11- 154.
- Aswathy, N. and Sathiadhas, R.** 2006. Socio-economic impact assessment of monsoon trawl ban on marine fisheries sector of Kerala, India, p. 781-792. In: *Sustain fish: School of Industrial Fisheries* (Eds. Kurup, B. M. and Ravindran, K.), Cochin University of Science and Technology, Cochin.
- Balachandran, K. K.** 2004. Does subterraneous flow initiate mud banks off the southwest coast of India? *Estuarine, Coastal and Shelf Sciences*, **59**: 589-598.
- Boltovskoy, E. and Wright, R.** 1976. *Recent Foraminifera*. Dr. W. Junk Publishers, The Hague.
- Cushman, J. A. and Wickenden, R. T. D.** 1929. Recent foraminifera from off Juan Fernandez Island. *Proceedings of the United States National Museum*, **75**: 1-66.
- Cushman, J. A.** 1939. A monograph of the foraminiferal family Nonionidae. *Geological Survey Professional Paper 191*, United States Department of the Interior.
- Cushman, J. A.** 1937. A monograph of the subfamily Virguliniinae of the foraminiferal family Buliminidae. *Cushman Laboratory for Foraminiferal Research, Specila Publication No. 9*.



- Damodaran, R.** 1973. Studies on the benthos of the mud banks of the Kerala coast. *Bulletin of the Department of Marine Sciences, University of Cochin*, **6**: 1-126.
- Ellis and Messina,** 2007. Catalogues for foraminifera, ostracoda and diatom. *Micropalaeontology Press, New York, USA* <http://micropress.org/em/login.php>
- Gopinathan, C. K. and Qasim, S. Z.** 1974. Mud banks of Kerala-their formation and characteristics. *Indian Journal of Marine Sciences*, **3**: 105-114.
- Held, P., Kegler, P. and Schrottke, K.** 2014. Influence of suspended particulate matter on salinity measurements. *Continental Shelf Research*, **85**: 1-8.
- Jiang, F. and Mehta, A. J.** 1996. Mudbanks of the southwest coast of India. V: wave attenuation. *Journal of Coastal Research*, **12**: 890-897.
- Kurtarkar, S.R., Nigam, R., Saraswat, R., Linshy, V.N.** 2011. Regeneration and abnormality in benthic foraminifera *Rosalina leei*: Implications in reconstructing past salinity changes. *Rivista Italiana di Paleontologia e Stratigrafia*, **117**: 189-196.
- Kurup, P. G. and Varadachari, V. V. R.** 1975. Hydrography of Purakad mud bank region. *Indian Journal of Marine Sciences*, **4**: 18-20.
- Kurup, P. G.** 1977. Studies on the physical aspects of the mud banks along the Kerala Coast with special reference to the Purakad mud bank. *Bulletin of Department of Marine Science University of Cochin*, **8**: 1-72.
- Loeblich, A. R. and Tappan, H.** 1988. *Foraminiferal genera and their classification (2 vols.)*. van Nostrand Reinhold Company, New York.
- Li, Y. and Parchure, T. M.** 1998. Mudbanks of the southwest coast of India. VI: Suspended sediment profiles. *Journal of Coastal Research*, **14**: 1363-1372.
- Loveson, V. J., Dubey, R., Dineshkumar, P. K., Nigam, R. and Naqvi, S. W. A.** 2016. An insight into subterranean flow proposition around Alleppey mudbank coastal sector, Kerala, India: inferences from the subsurface profiles of Ground Penetrating Radar. *Environmental Earth Sciences*, **75**: 1-13.
- Mallik, T. K., Mukherji, K. K. and Ramachandran, K. K.** 1988. Sedimentology of the Kerala mud banks (fluid muds?). *Marine Geology*, **80**: 99-118.
- Manasa, M., Saraswat, R., Nigam, R.** 2016. Assessing the suitability of benthic foraminiferal morpho-groups to reconstruct past monsoon from the Bay of Bengal. *Journal of Earth System Sciences*, **125**: 571-584.
- Manojkumar, P., Narayana, A. C. and Tatavarti, R.** 1998. Mudbank dynamics: Physical properties of sediments. *Journal of Geological Society of India*, **51**: 793-798.
- Mathew, J., Baba, M. and Kurian, N. P.** 1995. Mudbanks of southwest coast of India. I: Wave characteristics. *Journal of Coastal Research*, **11**: 168-178.

- Matoba, Y.** 1970 Distribution of recent shallow water foraminifera of Matsushima Bay, Niyagi Prefecture, northeast Japan. *Science Reports of the Tohoku University, Sendi, Second Series (Geology)*, **42**: 1-85.
- McCulloch, I.** 1981. *Qualitative observations on Recent Foraminiferal tests, Part IV, with emphasis on the Allan Hancock Atlantic Expedition Collections*. University of Southern California, Los Angeles.
- Muraleedharan, K. R., Dinesh Kumar, P. K., Prasanna Kumar, S., Srijith, B., John, S. and Naveen Kumar, K. R.** 2017. Observed salinity changes in the Alappuzha mud bank, southwest coast of India and its implication to hypothesis of mudbank formation. *Continental Shelf Research*, **137**: 39 – 45.
- Murthy, A. V. S., Rao, D. S., Ragunathan, A., Gopinathan, C. P. and Mathew, K. J.** 1984. Hypotheses on Mudbanks. *Bulletin Central Marine Fisheries Research Institute*, **31**: 8-18.
- Murray, J. W.** 1991. *Ecology and Palaeoecology of Benthic Foraminifera*. John Wiley & Sons Inc., New York.
- Narayana, A. C., Jago, C. F., Manojkumar, P. and Tatavarti, R.** 2008. Nearshore sediment characteristic and formation of mudbanks along the Kerala coast, southwest India. *Estuarine, Coastal and Shelf Science*, **78**: 341-352.
- Narayana, A. C., Manojkumar, P. and Tatavarti, R.** 2001. Beach dynamics related to the Ambalapuzha Mudbank along the southwest coast of India, p. 495 – 507. In: *Coastal and Estuarine Fine Sediment Processes* (Eds. Mc Anally, W. H. and Mehta, A. J.), Elsevier Science.
- National Wetland Atlas, Kerala** 2010. Space Applications Centre, Indian Space Research Organization, Ahmedabad and Kerala State Remote Sensing and Environment Centre, Thiruvananthapuram. *Ministry of Environment and Forests, Government of India- As a part of the project on National Wetland Inventory and Assessment (NWIA)*.
- Nair, P. V. R., Gopinathan, C. P., Balachandran, V. K., Mathew, K. J., Regunathan, A., Rao, D. S. and Murthy, A. V. S.** 1984. Ecology of mudbanks-phytoplankton productivity in Alleppey mudbank. *Bulletin Central Marine Fisheries Research Institute*, **31**: 28-34.
- Nigam, R., Saraswat, R., Kurtarkar, S.R.** 2006. Laboratory experiment to study effect of salinity variations on benthic foraminiferal species - *Pararotalia nipponica* (Asano). *Journal of the Geological Society of India*, **67**: 41-46.
- Nigam, R., Kurtarkar, S.R., Saraswat, R., Linshy, V.N., Rana, S.S.** 2008. Response of benthic foraminifera *Rosalina leei* to different temperature and salinity, under laboratory culture experiment. *Journal of the Marine Biological Association, U.K.*, **88**: 699-704.
- Nisha, N. R. and Singh, A. D.** 2012. Benthic foraminiferal biofacies on the shelf and upper continental slope off north Kerala (Southwest India). *Journal Geological Society of India*, **80**: 783-801.
- Padmalal, D., Kumaran, K. P. N., Nair, K. M., Ruta B. Limaye, Vishnu Mohan, S., Baijulal, B. and Anooja, S.** 2014(a). Consequences of sea level and climate changes on the morphodynamics of a tropical coastal lagoon during Holocene: An evolutionary mode. *Quaternary International*, **333**: 156-172.

- Padmalal, D., Maya, K., Vishnu Mohan, S. and Baburaj, B.** 2014(b). Holocene land-sea interactions and landform changes in the coastal lands of Vembanad lagoon, Kerala, SW India. *Indian Journal of Geo-Marine Sciences*, **43**: 1152-1156.
- Ragunathan, A., Mathew, K. J., Rao, D. S., Gopinathan, C. P., Surendranathan Kurup, N. and Murthy, A. V. S.** 1984. Fish and fisheries of the mudbanks. *Bulletin Central Marine Fisheries Research Institute*, **31**: 60-71.
- Ramakrishnan, M. and Vaidyanandhan, R.** 2010. *Geology of India*. Geological Society of India (Pub.), I & II.
- Rao, D. S.** 1967. The Mudbanks of the West coast of India. Souvenir 20<sup>th</sup> Anniversary Central Marine Fisheries Research Institute, 99-102.
- Saraswat, R. and Nigam, R.** 2013. Benthic Foraminifera. *Encyclopedia of Quaternary Science*, **2**: 765-774.
- Saraswat, R.** 2015. Non-destructive foraminiferal paleoclimatic proxies: A brief insight. *Proceedings Indian National Science Academy*, **81**, 381-395.
- Seibold, I. and Seibold, E.** 1981. Offshore and lagoonal benthic foraminifera near Cochin (southwest India)- distribution, transport, ecological aspects. *Neues Jahrbuch f. Geologie u. Paläontologie Abhandlungen. Bd*, **162**: 1-56.
- Seibold, I.** 1975. Benthonic Foraminifera from the coast and lagoon of Cochin (South India). *Revista Espanola de Micropaleontologia*, **7**:175-213.
- Sen Gupta, B. K.** 1999. *Modern Foraminifera*. Kluwer Academic Press, 371 p.
- Setty, M. G. A. P. and Nigam, R** 1980. Microenvironments and anomalous benthic foraminiferal distribution within the neritic regime of the Dabhol-Vengurla sector (Arabian Sea). *Rivista Italiana di Paleontologia e Stratigrafia*, **86**: 417-433.
- Sethulekshmi, A. J.** 1958. Foraminifera of the Travancore coast. *Bulletin Central Research Institute, University of Kerala*, **C-6**: 1-88.
- Silas, E. G.** 1984. Mudbanks of Kerala-Karnataka-need for integrated study. *Bulletin Central Marine Fisheries Research Institute*, **31**: 2-7.
- Soman, K.** 2013. *Geology of Kerala*. Geological Society of India, Bangalore.
- Shyam S. S., Manjusha U., Pushkaran, K. N., Suresh, V. K. and Sunil, P. V.** 2106. Assessment of socio-economic impact of mud bank fisheries along Punnapra, Kerala. *International Journal of Fisheries and Aquatic Studies*, **4**: 32-39.
- Shynu, R., Rao, P. V. C., Samiksha, S. V., Vethamony, P., Naqvi, S. W. A., Kessarkar, P. M., Babu, M. T. and Dineshkumar, P. K.** 2017. Suspended matter and fluid mudoff Alleppey, southwest coast of India. *Estuarine Coastal and Shelf Science*, **185**: 31-43.
- Tatavarti, R., Narayana, A. C., Kumar, P. M. and Chand, S.** 1999. Mudbank regime off the Kerala coast during monsoon and non-monsoon seasons. *Proceedings of Indian Academy of Sciences-Earth and Planetary Sciences*, **108**: 57-68.

**Tatavarti, R. and Narayana, A. C.** 2006. Hydrodynamics in a mud bank regime during nonmonsoon and monsoon seasons. *Journal of Coastal Research*, **22**: 1463–1473.

**Varadarajan, K. and Nair, K. M.** 1978. Stratigraphy and structure of Kerala Tertiary basin. *Journal of Geological Society of India*, **19**: 217-220.

## Legend to Figures, Plates and Tables

**Fig. 1.** Location map of mudbank, off Alleppey, Kerala, India. The inset map is of southern India (A) and its Kerala state (B). The station locations (C), are of pre-monsoon season.

**Fig. 2.** The absolute abundance of living benthic foraminifera during (a) Pre-monsoon, (b) Monsoon and (c) Post-monsoon season.

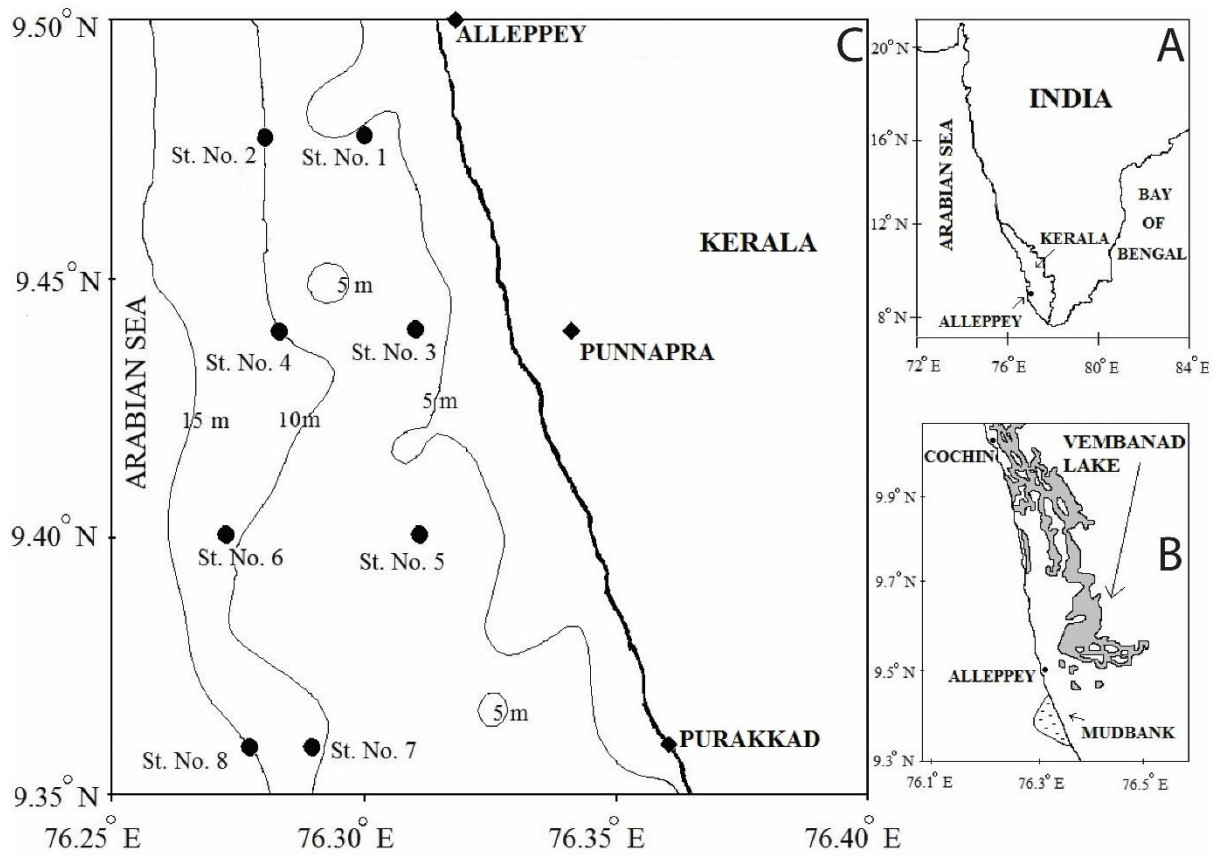
**Plate 1:** 1- *Ammobaculites dilatatus* (Cushman and Bronnimann 1948) (a) ventral view (b) dorsal view (c) apertural view; 2- *Ammobaculites exiguus* (Cushman and Bronnimann 1948) (a) dorsal view (b) ventral view (c) apertural view; 3- *Nouria polymorphinoides* (Heron-Allen and Earland 1914) (a) side view (b) apertural view; 4- *Asterorotalia dentata* (Parker and Jones 1865) (a) dorsal view (b) ventral view (c) apertural view; 5- *Brizalina limbata* (Brady) (a) side view (b) lateral view (c) apertural view; 6- *Brizalina ordinaria* (Phleger and Parker 1954) (a) side view (b) lateral view (c) apertural view; 7- *Brizalina striatula* (Cushman 1922) (a) side view (b) lateral view (c) apertural view.

**Plate 2:** 8- *Siphogenerina virgula* (Brady) (a) side view (b) aperture position (c) apertural view; 9- *Cancris auricula* (Fichtel and Moll) (a) dorsal view (b) ventral view (c) apertural view; 10- *Cancris carinatus* (Millet 1904) (a) dorsal view (b) ventral view (c) apertural view; 11- *Nonion belridgense* (Barbat and Johnson 1934) (a) side view (b) apertural view; 12- *Nonion scapha* (Fichtel and Moll) Cushman 1939 (a) side view (b) apertural view; 13- *Protelphidium* cf. *schmitti* (Cushman and Wickenden 1929) (a) side view (b) apertural view; 14- *Pararotalia* cf. *globosa* (Millet 1903) (a) dorsal view (b) ventral view (c) apertural view; 15- *Ammonia sobrina* (Schupack 1934) (a) dorsal view (b) ventral view (c) apertural view; 16- *Ammonia tepida* (Cushman 1926) (a) dorsal view (b) ventral view (c) apertural view; 17- *Cribronionion somaense* (Takayangi 1955) (a) side view (b) apertural view; 18- *Elphidium excavatum* (Cushman 1930) (a) side view (b) apertural view; 19- *Florilus(?) tobagoensis* (McCulloch 1981) (a) side view (b) apertural view.

**Table 1.** Details of sampling locations and absolute abundance of living foraminifera (TLN) from mudbank area off Alleppey, Kerala per 10 g sediment during (a) pre-monsoon, (b) monsoon and (c) post-monsoon season.

**Table 2.** Details of bottom water salinity, dissolved oxygen and temperature from the mudbank area off Alleppey, Kerala during (a) pre-monsoon, (b) monsoon and (c) post-monsoon season.

**Table 3.** Comparison of foraminifera size from the study area with holotype/ topotype



**Figure 1**

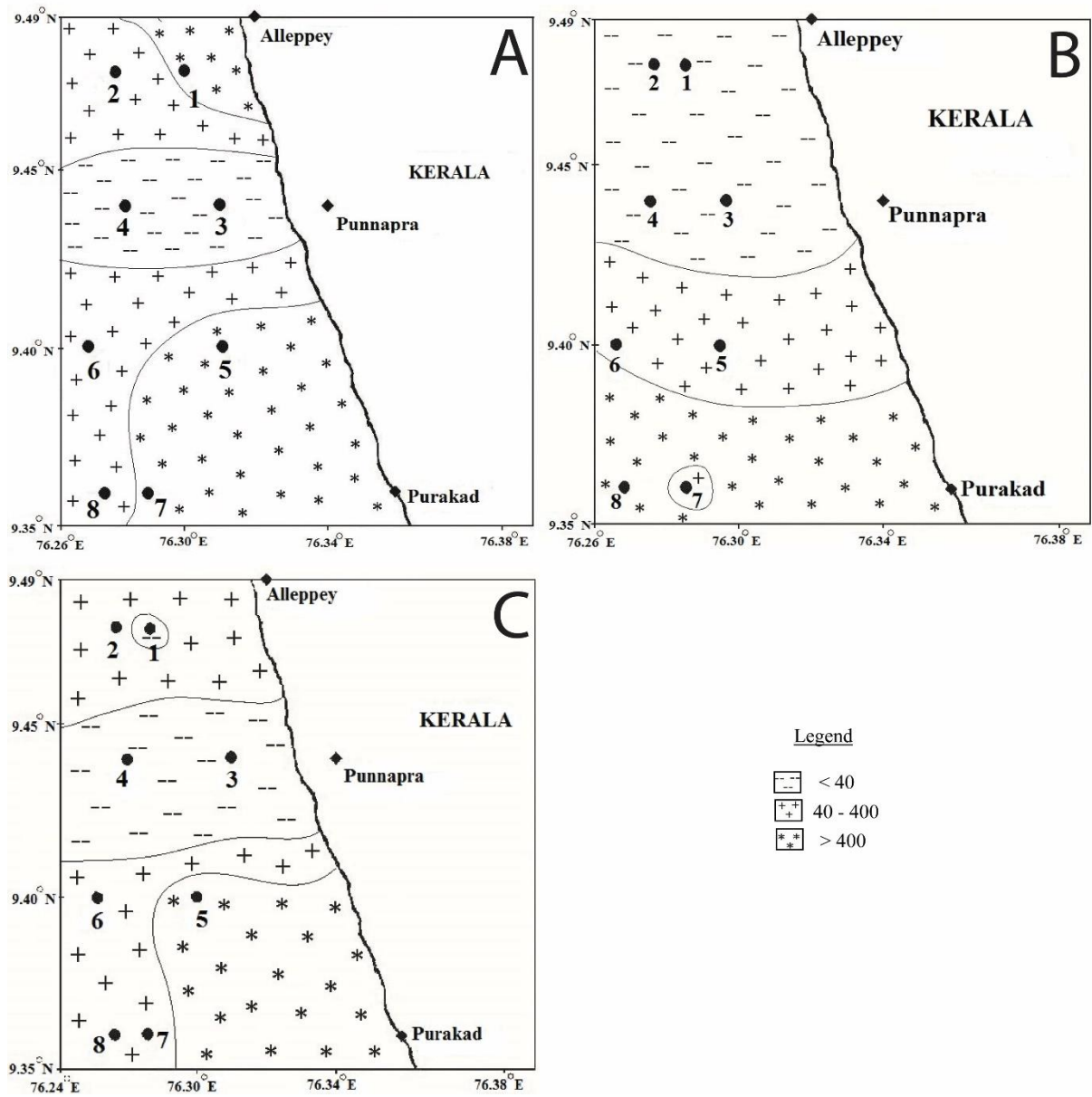


Figure 2

PLATE 1

(unless otherwise mentioned scale bar is 50um)

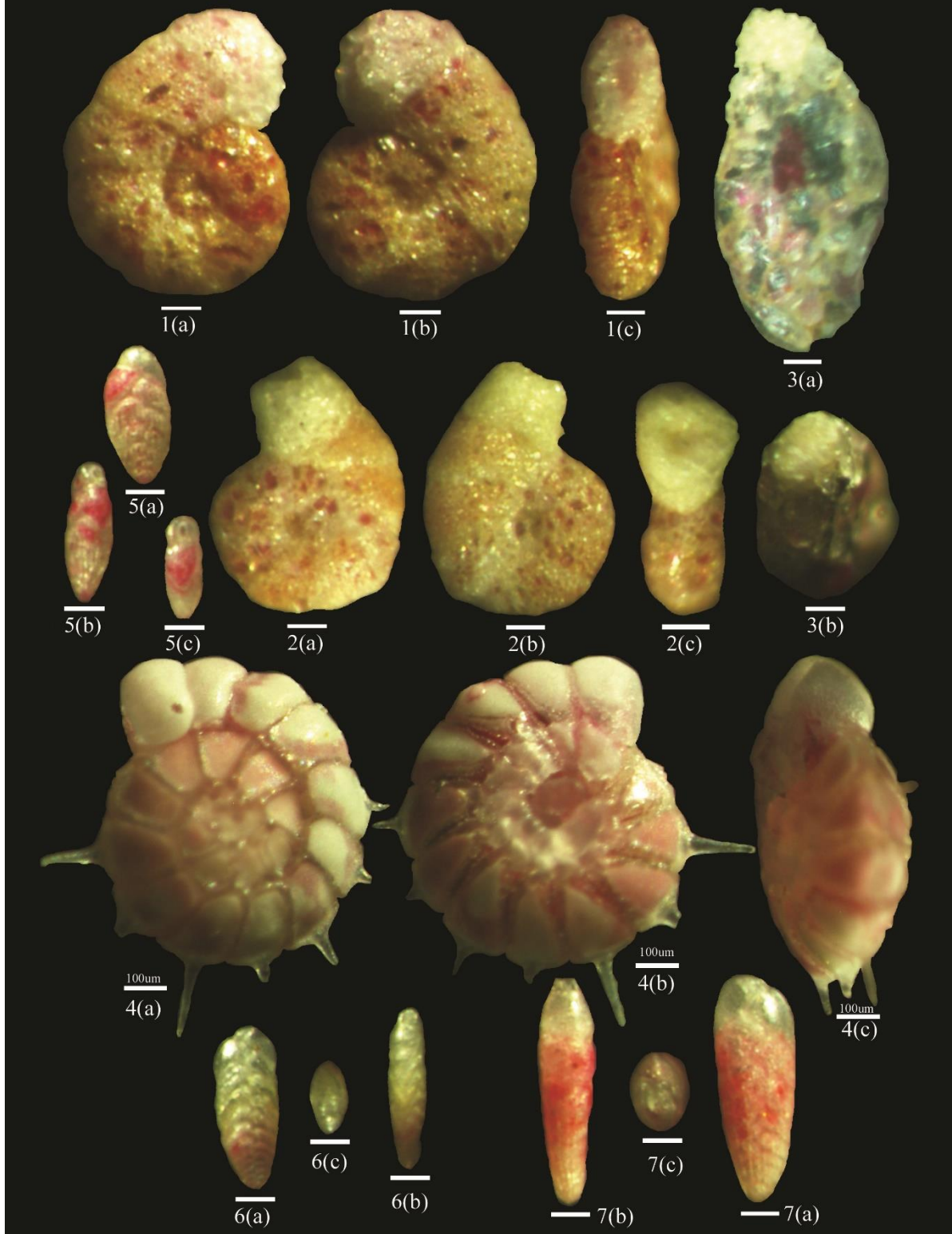


Plate 1



PLATE 2

(unless otherwise mentioned scale bar is 50um)

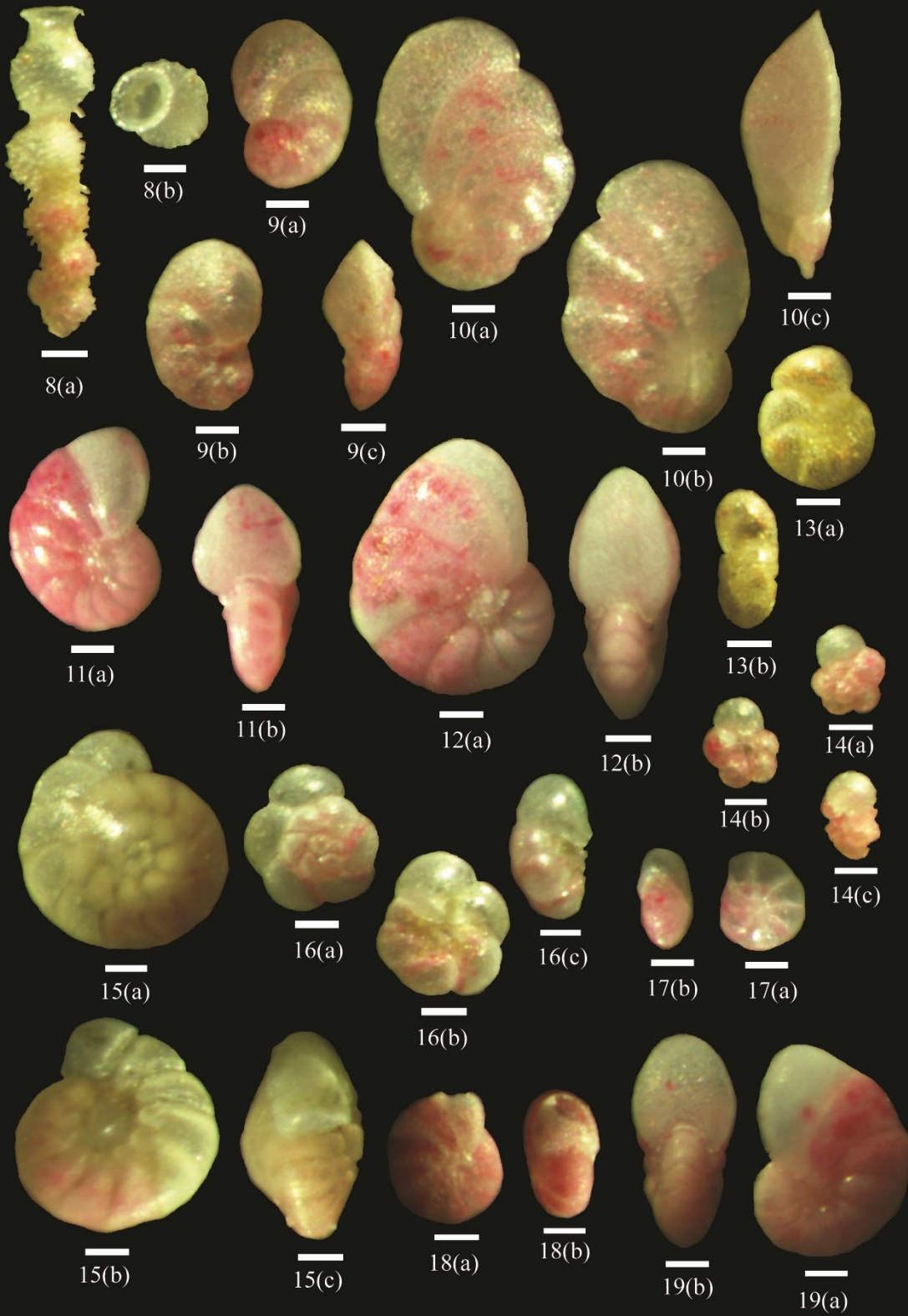


Plate 2

**Table 1.**

<b>Station No.</b>	<b>Longitude (°E)</b>	<b>Latitude (°N)</b>	<b>Depth (m)</b>	<b>TLN</b>
1	76.3	9.48	6	454.0
2	76.28	9.48	10	231.0
3	76.31	9.44	6	22.0
4	76.28	9.44	10	29.0
5	76.31	9.4	7	554.0
6	76.29	9.4	11	322.0
7	76.3	9.36	11	709.0
8	76.29	9.36	15	57.0

**(a)**

<b>Station No.</b>	<b>Longitude (°E)</b>	<b>Latitude (°N)</b>	<b>Depth (m)</b>	<b>TLN</b>
1	76.29	9.48	9	100.0
2	76.28	9.48	12	59.0
3	76.3	9.44	8	19.0
4	76.28	9.44	13	28.0
5	76.3	9.4	8	195.0
6	76.27	9.4	14	364.0
7	76.29	9.36	13	77.0
8	76.27	9.36	16	1214.0

**(b)**

<b>Station No.</b>	<b>Longitude (°E)</b>	<b>Latitude (°N)</b>	<b>Depth (m)</b>	<b>TLN</b>
1	76.29	9.48	8	8.0
2	76.28	9.48	11	61.0
3	76.31	9.44	6	18.0
4	76.28	9.44	11	27.0
5	76.3	9.4	8	616.0
6	76.27	9.4	12	91.0
7	76.29	9.36	13	248.0
8	76.28	9.36	15	247.0

**(c)**

**Table 2.**

<b>S. No.</b>	<b>Station No.</b>	<b>Longitude (°E)</b>	<b>Latitude (°N)</b>	<b>Depth (m)</b>	<b>Salinity (psu)</b>	<b>DO (mg/l)</b>	<b>Temp. (°C)</b>
1	St. No. 1	76.31	9.48	6	na	5.3	na
2	St. No. 2	76.28	9.48	10	na	4.6	na
3	St. No. 3	76.31	9.44	6	na	5.2	na
4	St. No. 4	76.28	9.44	10	na	4.9	na
5	St. No. 5	76.31	9.4	7	na	5.9	na
6	St. No. 6	76.29	9.4	11	na	4.8	na
7	St. No. 7	76.30	9.36	11	na	5.0	na
8	St. No. 8	76.29	9.36	15	na	4.8	na

**(a)**

<b>S. No.</b>	<b>Station No.</b>	<b>Longitude (°E)</b>	<b>Latitude (°N)</b>	<b>Depth (m)</b>	<b>Salinity (psu)</b>	<b>DO (mg/l)</b>	<b>Temp. (°C)</b>
1	St. No. 1	76.29	9.48	9	34.6	0.5	23.9
2	St. No. 2	76.28	9.48	12	34.2	0.3	23.6
3	St. No. 3	76.30	9.44	8	24.4	0.6	24.8
4	St. No. 4	76.28	9.44	13	26.9	0.3	24.4
5	St. No. 5	76.30	9.4	8	34.7	0.2	23.5
6	St. No. 6	76.27	9.4	14	34.6	0.2	23.3
7	St. No. 7	76.29	9.36	13	34.8	0.2	23.2
8	St. No. 8	76.27	9.36	16	34.8	0.2	23.0

**(b)****(c)**

<b>S. No.</b>	<b>Station No.</b>	<b>Longitude (°E)</b>	<b>Latitude (°N)</b>	<b>Depth (m)</b>	<b>Salinity (psu)</b>	<b>DO (mg/l)</b>	<b>Temp. (°C)</b>
1	St. No. 1	76.29	9.48	8	33.8	5.1	29.1
2	St. No. 2	76.28	9.48	11	33.8	5.3	28.8
3	St. No. 3	76.31	9.44	6	31.9	5.3	29.1
4	St. No. 4	76.28	9.44	11	26.7	5.1	28.8
5	St. No. 5	76.30	9.4	8	33.9	4.9	29.1
6	St. No. 6	76.27	9.4	12	33.9	5.6	28.7
7	St. No. 7	76.29	9.36	13	34.0	5.6	28.7
8	St. No. 8	76.28	9.36	15	33.9	5.1	28.7

**Table 3.**

S.No.	Dimension of species from study area	Dimension of holotype or topotype
1.	<i>Ammobaculites dilatatus</i> Cushman and Bronnimann 1948 height = 0.23 – 0.37 mm maximum diameter = 0.23 – 0.33 mm thickness = 0.05 – 0.09 mm	<i>Ammobaculites dilatatus</i> Cushman and Bronnimann 1948 (Ellis and Messina Cat. No. 032938) height = 0.50 – 0.65 mm maximum diameter = 0.40 – 0.45 mm
2.	<i>Ammobaculites exiguus</i> Cushman and Bronnimann 1948 height = 0.28 – 0.33 mm diameter of coiled part = 0.20 – 0.24 mm diameter of uncoiled part = 0.11 – 0.12 mm	<i>Ammobaculites exiguus</i> Cushman and Bronnimann 1948 (Ellis and Messina 032941) height = 0.30 – 0.45 mm diameter of coiled part = 0.13 – 0.20 mm diameter of uncoiled part = 0.10 – 0.12 mm
3.	<i>Nouria polymorphinoides</i> Heron-Allen and Earland 1914 length = 0.47 – 0.55 mm breath = 0.20 – 0.23 mm thickness = 0.09 mm	<i>Nouria polymorphinoides</i> Heron-Allen and Earland 1914 (Ellis and Messina Cat. No. 14276) Kerimba specimen: length = 1 – 1.9 mm, breath = 0.6 – 1 mm New Zealand specimen: length = 0.7 – 0.85 mm, breath = 0.25 – 0.30 mm
4.	<i>Asterorotalia dentata</i> Parker and Jones 1865 height = 0.26 – 0.97 mm maximum diameter = 0.23 – 0.95 mm thickness = 0.14 – 0.50 mm	<i>Rotalia beccarii</i> (Linne) var. <i>dentata</i> Parker and Jones 1865 (Sethulekshmi, 1958, pl. 3, fig. 112 a, a <sub>1</sub> , a <sub>2</sub> , b <sub>1</sub> , b <sub>2</sub> , p. 73) diameter = 0.69 – 0.80 mm
5.	<i>Brizalina</i> * <i>limbata</i> Brady length = 0.18 mm maximum width = 0.09 mm thickness = 0.06 mm	<i>Loxostoma limbatum</i> Brady (Cushman, 1937, pl. 21, fig. 26 – 29, p. 186) length = 1 mm maximum width = 0.35 – 0.40 mm thickness = 0.20 – 0.25 mm
6.	<i>Brizalina</i> † <i>ordinaria</i> Phleger and Parker 1954 length = 0.20 mm maximum width = 0.07 mm thickness = 0.06 mm	<i>Bolivina simplex</i> Phleger and Parker 1951 (Ellis and Messina Cat. No. 73632) length = 0.32 mm maximum width = 0.14 mm thickness = 0.07 mm
7.	<i>Brizalina</i> * <i>striatula</i> Cushman 1922 length = 0.23 – 0.33 mm	<i>Bolivina striatula</i> Cushman 1922 (Ellis and Messina Cat. No. 1957)

	maximum width = 0.09 – 0.12 mm thickness = 0.07 – 0.09 mm	length = 0.35 mm
8.	<i>Siphogenerina virgula</i> (Brady) length = 0.39 mm maximum breath = 0.09 mm	<i>Sagrina virgula</i> (Brady) 1879 (Ellis and Messina Cat. No. 20069) length = 0.50 mm
9.	<i>Cancris auricula</i> Fichtel and Moll height = 0.20 mm maximum diameter = 0.14 mm thickness = 0.09 mm	<i>Nautilus auricula</i> Fichtel and Moll 1798 (Ellis and Messina Cat. No. 74021) height = 0.90 mm maximum diameter = 0.55 mm thickness = 0.31 mm
10.	<i>Cancris carinatus</i> Millet 1904 height = 0.30 – 0.33 mm maximum diameter = 0.20 – 0.23 mm thickness = 0.11 – 0.14 mm	<i>Pulvinulina oblonga</i> (Williamson) var. <i>carinata</i> Millet 1904 (Ellis and Messina Cat. No. 79666) height = 0.48 mm diameter = 0.31 mm thickness = 0.20 mm
11.	<i>Nonion belridgense</i> Barbat and Johnson 1934 height = 0.20 – 0.25 mm maximum diameter = 0.16 mm thickness = 0.06 – 0.07 mm	<i>Nonion belridgense</i> Barbat and Johnson 1934 (Cushman, 1939, pl. 5, fig. 1, p. 18) height = 0.47 mm maximum diameter = 0.32 mm thickness = 0.24 mm
12.	<i>Nonion scapha</i> (Fichtel and Moll) Cushman 1939 height = 0.24 – 0.33 mm maximum diameter = 0.20 – 0.24 mm thickness = 0.07 – 0.09 mm	<i>Nonion scapha</i> (Fichtel and Moll) Cushman 1939 (Cushman, 1939, pl. 5, figs. 18 – 21, p. 20) height = 0.42 – 0.76 mm maximum diameter = 0.30 – 0.49 mm thickness = 0.11 – 0.24 mm
13.	<i>Protelphidium</i> cf. <i>schmitti</i> Cushman and Wickenden 1929 height = 0.18 mm maximum diameter = 0.14 mm thickness = 0.07 mm	<i>Elphidium schmitti</i> Cushman and Wickenden 1929 (Ellis and Messina Cat. No. 6223) diameter = 0.36 mm thickness = 0.15 mm
14.	<i>Pararotalia</i> cf. <i>globosa</i> Millet 1903 height = 0.10 mm maximum diameter = 0.08 mm thickness = 0.05 mm	<i>Rotalia murrayi</i> Heron-Allen and Earland 1915 (Ellis and Messina Cat. No. 19529) height = 0.20 – 0.23 mm diameter = 0.25 – 0.32 mm

15.	<i>Ammonia sobrina</i> Schupack 1934 height = 0.1 – 0.24 mm maximum diameter = 0.08 – 0.22 mm thickness = 0.05 – 0.15 mm	<i>Rotalia beccarii</i> (Linne) var. <i>sobrina</i> Schupack 1934 (Ellis and Messina Cat. No. 19330) diameter = 0.3 – 0.6 mm thickness = 0.15 – 0.4 mm
16.	<i>Ammonia tepida</i> Cushman 1926 height = 0.09 – 0.23 mm maximum diameter = 0.08 – 0.20 mm thickness = 0.06 – 0.10 mm	<i>Rotalia beccarii</i> (Linne) var. <i>tepida</i> Cushman 1926 (Ellis and Messina Cat. No. 19332) diameter = 0.35 mm
17.	<i>Cribrononion</i> <sup>‡</sup> <i>somaense</i> Takayangi 1955 height = 0.10 – 0.11 mm maximum diameter = 0.09 – 0.10 mm thickness = 0.06 mm	“ <i>Elphidium</i> ” <i>somaense</i> Takayangi 1955 (Matoba, 1970, pl. 7, fig. 11 – 12, p. 53) height = 0.19 – 0.22 mm maximum diameter = 0.16 – 0.19 mm thickness = 0.07 – 0.08 mm
18.	<i>Elphidium excavatum</i> Cushman 1930 height = 0.16 mm maximum diameter = 0.13 mm thickness = 0.07 mm	<i>Polystomella excavata</i> Terquem 1875 (Ellis and Messina Cat. No. 17361) height = 0.35 mm diameter = 0.32 mm
19.	<i>Florilus</i> (?) <i>tobagoensis</i> Mc Culloch 1981 height = 0.14 – 0.25 mm maximum diameter = 0.11 – 0.20 mm thickness = 0.05 – 0.08 mm	<i>Florilus</i> (?) <i>tobagoensis</i> Mc Culloch 1981 height = 0.27 – 0.37 mm maximum diameter = 0.27 mm thickness = 0.06 – 0.17 mm

\*The test is elongated, lanceolate and compressed. Periphery of the test is acute to sub-acute. Surface ornamentation comprises of narrow imperforate costae prominent on the early half of the test (Loeblich and Tappan 1988). Based upon these characters the genus is changed to *Brizalina*.

† The test is elongated, lanceolate and compressed. Periphery of the test is acute to sub-acute and surface is smooth (Loeblich and Tappan 1988). Based upon these characters the genus is changed to *Brizalina*.

‡ Matoba (1970) discussed about the possibility that “*Elphidium somaense*” (pl. 7, fig. 11- 12, p. 53) may belong to new genus based upon granular microstructure of the wall. Genus *Cribrononion* has granular microstructure of the wall along with pustules on the apertural face (Loeblich and Tappan 1988). Based upon these characters the genus is changed to *Cribrononion*.