

Retrieval of sea surface velocities using sequential Ocean Colour Monitor (OCM) data

J S PRASAD^{1,*}, A S RAJAWAT¹, YASWANT PRADHAN¹, O S CHAUHAN² and S R NAYAK¹

**Presently at Applied Geophysical Laboratories, Department of Geophysics, University of Houston, Texas 77204, USA*

¹Marine and Water Resources Group, Remote Sensing Applications Area, Space Applications Centre (ISRO), Ahmedabad 380 015, India.

²Geological Oceanography Division, National Institute of Oceanography, Dona Paula, Goa 403 004, India.

The Indian remote sensing satellite, IRS-P4 (Oceansat-I) launched on May 26th, 1999 carried two sensors on board, i.e., the Ocean Colour Monitor (OCM) and the Multi-frequency Scanning Microwave Radiometer (MSMR) dedicated for oceanographic research. Sequential data of IRS-P4 OCM has been analysed over parts of both east and west coast of India and a methodology to retrieve sea surface current velocities has been applied. The method is based on matching suspended sediment dispersion patterns, in sequential two time lapsed images. The pattern matching is performed on a pair of atmospherically corrected and geo-referenced sequential images by Maximum Cross-Correlation (MCC) technique. The MCC technique involves computing matrices of cross-correlation coefficients and identifying correlation peaks. The movement of the pattern can be calculated knowing the displacement of windows required to match patterns in successive images. The technique provides actual flow during a specified period by integrating both tidal and wind influences. The current velocities retrieved were compared with synchronous data collected along the east coast during the GSI cruise ST-133 of R.V. Samudra Kaustubh in January 2000. The current data were measured using the ocean current meter supplied by the Environmental Measurement and CONTROL (EMCON), Kochi available with the Geological Survey of India, Marine Wing. This current meter can measure direction and magnitude with an accuracy of $\pm 5^\circ$ and 2% respectively. The measurement accuracies with coefficient of determination (R^2) of 0.99, for both magnitude (cm.s^{-1}) and direction (deg.) were achieved.

1. Introduction

The Indian remote sensing satellite (IRS-P4), also known as the OCEANSAT-1, was launched on May 26th, 1999 by the Indian Space Research Organisation (ISRO). The satellite carried two oceanographic payloads i.e., the Ocean Colour Monitor (OCM) and the Microwave Scanning Multi-frequency Radiometer (MSMR). The first payload of OCM is designed to measure ocean colour, the spectral variation of water leaving radiance that can be related to concentration of phyto-

plankton pigments, suspended sediments, coloured dissolved organic matter i.e., yellow substance or gelbstoff and aerosols. This paper focuses on retrieving advective vectors using sediments as a tracer from the suspended sediment maps derived from the OCM data. The method is based on matching suspended sediment dispersion patterns, in sequential two-time lapsed images. The pattern matching is performed on a pair of atmospherically corrected and geo-referenced sequential images by Maximum Cross-Correlation (MCC) technique. The work follows the technique developed by many

Keywords. IRS-P4 OCM; suspended sediment concentration; advective velocity; maximum cross-correlation; co-registration.

investigators (La Violette 1984; Vastano and Borders 1984; Emery *et al* 1986; Kelly 1989; Garcia and Robinson 1989; Wu *et al* 1992) and has been applied on IRS-P4 OCM derived suspended sediment maps for the Indian region. The velocities retrieved are time-averaged velocities between the data sets used. This methodology retrieves velocities in terms of rate of transport of sediments. The retrieved velocities were validated using synchronous data collected along the east coast during a cruise (ST-133) onboard R.V. Samudra Kaustubh in January 2000. It is suggested that the use of this technique will find useful applications in providing inputs to hydrodynamic modelling of coastal processes such as computation of alongshore transport, pollutants dispersion rates, siltation, etc.

2. Materials and methods

2.1 Selection of sequential data

As part of the IRS-P4 OCM validation programme, synchronous sea truth data with the satellite pass were collected in the northern Bay of Bengal during January 13th–25th, 2000 onboard R. V. Samudra Kaustubh Cruise No ST-133, a vessel owned by the Geological Survey of India (GSI), Kolkata. IRS-P4 OCM data of the same period were selected for this study. OCM collects data in eight spectral channels (402–422, 433–453, 480–500, 500–520, 545–565, 660–680, 745–785, 845–885 nm) with spatial resolution of 360 m, every alternate day for the same region at local time around 12 noon with radiometric resolution of 12 bits. Each OCM scene covers 1420 km by 1420 km ground area. Sediment plumes off Mahanadi delta provided persistent features which were useful for implementing the technique.

2.2 Atmospheric correction

It is well known that in the case of ocean remote sensing, the total signal received (in VIS-NIR) at the satellite altitude is dominated by radiance contribution through atmospheric scattering processes and only 8–10% of the signal corresponds to oceanic reflectance. Therefore, it becomes mandatory to correct for atmospheric effect before retrieving any useful information from space.

The Top of the Atmosphere (TOA) radiance in OCM channel seven (765 nm) and eight (865 nm), mainly corresponds to contributions coming from the atmosphere, since water leaving radiance L_w (765 and 865 nm) can safely be assumed to be zero (Gordon and Clark 1981). An exponential relationship for the spectral behaviour of aerosol optical

depth has been used in the atmospheric correction algorithm. A relationship has been obtained for the spectral behaviour of the aerosol optical depth using channels 765 nm and 865 nm of OCM data. The aerosol optical thickness has been extrapolated to visible channels using this exponential relationship. The OCM data were analysed using the atmospheric correction and bio-optical algorithms developed initially for IRS-P3 MOS data (Mohan *et al* 1998) and later modified for IRS-P4 OCM data (Chauhan *et al* 2001).

A sensitivity analysis was carried out on the OCM algorithm to study the changes in the retrieval accuracy of total suspended sediment concentration (SSC) due to errors in the OCM sensor detected radiances, choice of aerosol optical depth model (in the atmospheric correction procedure) and variability in the atmospheric ozone content and differences between the OCM band wavelengths and the wavelengths actually required for the estimation of SSC (SAC Technical Report 2000). This sensitivity analysis shows that for SSC detection with an accuracy of 30%, the tolerable percentage radiance errors in the OCM bands are less than 6.0, 5.0, 6.0, 3.5 and 6.0 in bands 4, 5, 6, 7 and 8, respectively. The percentage error in SSC estimation due to the wrong choice of aerosol optical depth model and differences in the central wavelengths and the band widths are less than 10.0 and 1.0 respectively. Percentage errors in SSC retrieval due to 10, 20 and 30% changes in ozone content are less than 1.0, 1.9 and 3.1 respectively. It is clear from the above discussion that accuracy of atmospheric correction procedures strongly influence retrieval of SSC required for the application of MCC technique. Figure 1 shows IRS-P4 OCM images for January 13th and 15th, 2000 before atmospheric correction as false colour composite (left panels) and after atmospheric correction as suspended sediment concentration (right panels) maps over Dhamra estuary, north Bay of Bengal.

2.3 Geometric correction

The implementation of pattern matching technique requires careful geometric correction and co-registration of the successive images within an error limit of one pixel. A rotation between the images reduces the matching coherency and a translation shift reduces the matching accuracy. A two-stage approach was followed. First of all geometric correction was applied separately on individual data sets to remove image distortion and bring them to a standard geographic projection, with modified everest datum (i.e., a local geodetic datum, based on the everest spheroid that

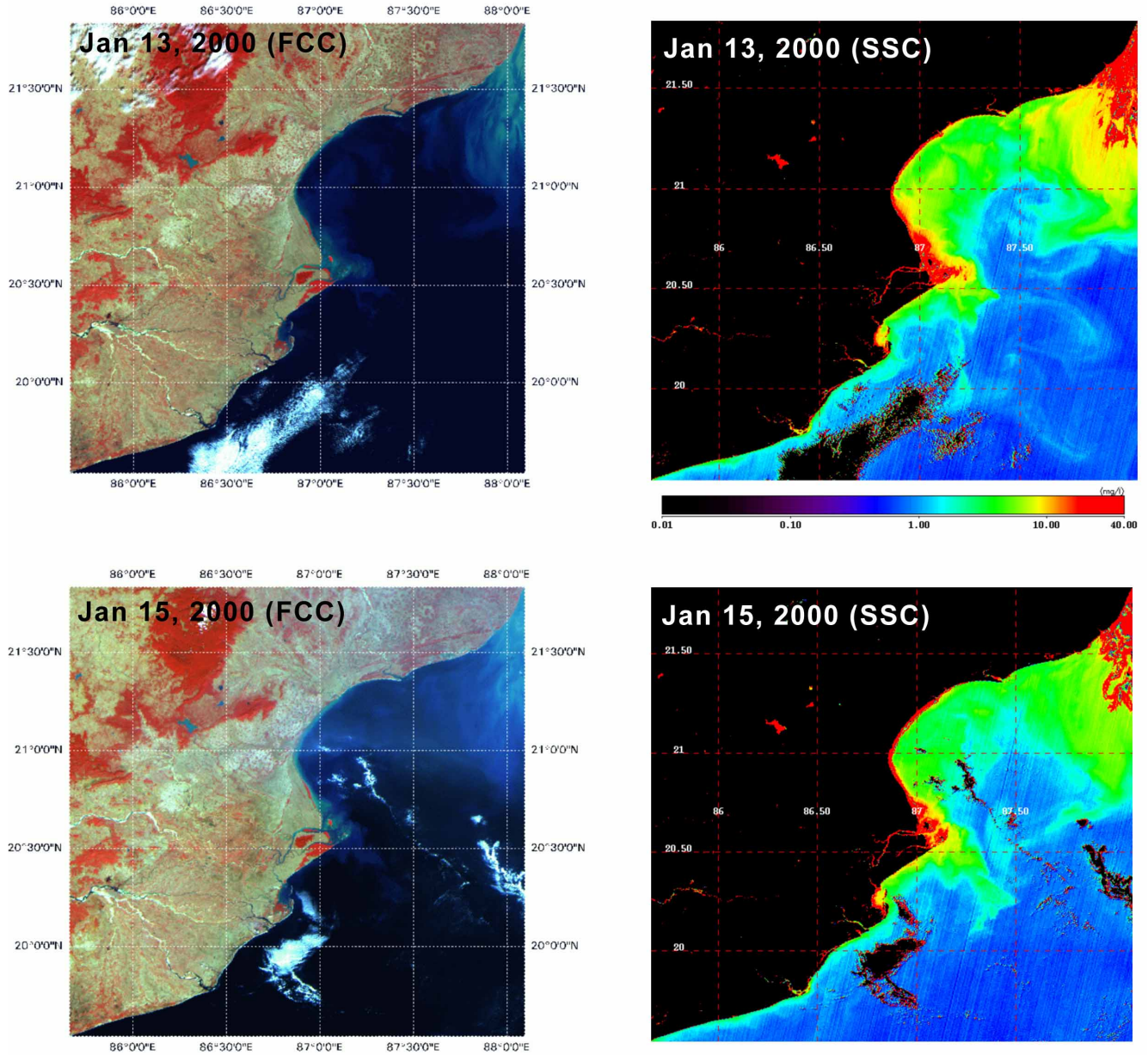


Figure 1. IRS-P4 OCM images for January 13th and 15th, 2000 before atmospheric correction are shown as false colour composite (left panels) and after atmospheric correction are shown as suspended sediment concentration (right panels) maps over Dhamra estuary, north Bay of Bengal. Note the distinct appearance of suspended sediments after atmospheric correction.

best fits the extent of the Indian subcontinent). In the second stage co-registration was done by warping one image to the other using polynomial transformation. The transformation was defined by matching more than 25 pairs (as many as possible) of Ground Control Points (GCP) on the images, selected from identifiable coastline features surrounding the area under study. The resampling at both the stages was performed by cubic convolution interpolation techniques to keep the spatial distortions at a minimum (Legeckis and Pitchard 1976; Emery and Ikeda 1984). The pair of the images could be co-registered within an error limit of one pixel (here 360 meters).

2.4 Retrieval of suspended sediments

The suspended sediment concentrations in the coastal areas have been derived using water-leaving radiance in band 490, 555 and 670 nm. The algorithm initially proposed by Tassan (1994) has been used to compute suspended sediments from OCM data. It has the following mathematical form:

$$\log S = 1.83 + 1.26(\log X_s) \text{ for } 0.0 \leq S \leq 40.0 \quad (1)$$

where S is suspended sediment concentration in mg/l and X_s is the variable defined as

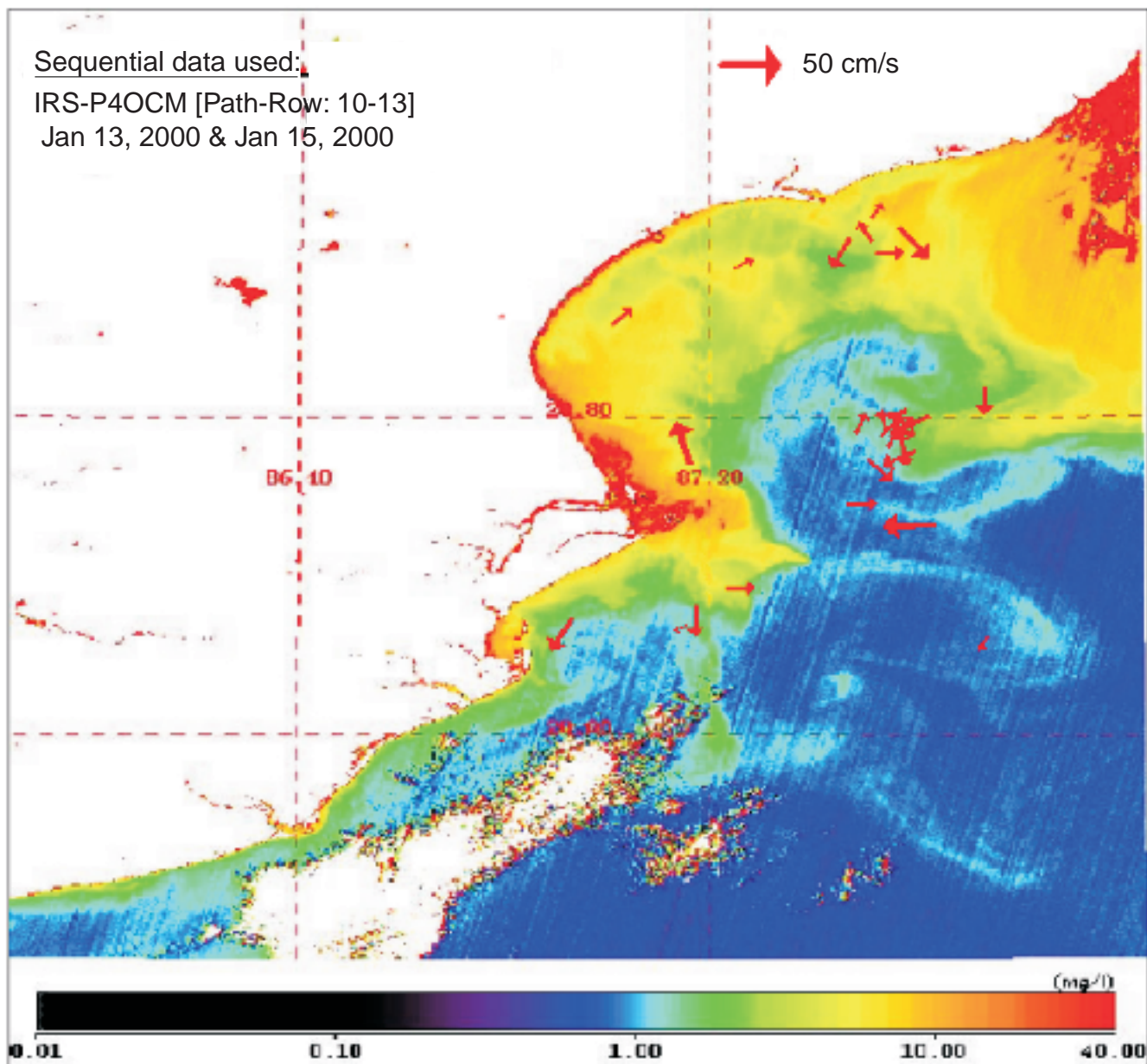


Figure 3. Advective sea surface velocities derived from sequential IRS-P4 OCM suspended sediment imageries (January 13th and 15th, 2000) over Dhamra estuary, north Bay of Bengal.

3. Results and discussions

The patterns of ocean colour on sequential images are used as tracers to measure displacements of surface waters. The velocity derived, as a measure of this transport is known as the advective velocity. The spatial resolution was one of the major constraints for achieving the desired accuracy (Garcia and Robinson 1989; Wu *et al* 1992). IRS-P4 OCM data has improved spatial resolution and distinct signatures of suspended sediments acting as tracer and hence they were analysed to derive the advective velocities. Figure 3 shows the

velocity vectors overlaid on suspended sediment concentration map derived from IRS-P4 OCM data of January 13th, 2000. The current velocities retrieved were compared with simultaneous data collected along the east coast of India. The current data were measured using ocean current meter supplied by the Environmental Measurement and Control (EMCON), Kochi; available with the Geological Survey of India, Marine Wing. This current meter can measure direction and magnitude with an accuracy of $\pm 5^\circ$ and 2% respectively. The resultant magnitude and direction were calculated by averaging 10 and 50 readings respec-

Table 1. Comparison of *in situ* current vectors and advective velocity vectors derived by maximum cross-correlation pattern matching method applied on sequential (January 13th and 15th, 2000) IRS-P4 OCM data covering north Bay of Bengal.

Sr. No.	Latitude (°N)	Longitude (°E)	<i>In situ</i> magnitude (cm.s ⁻¹)	Derived magnitude (cm.s ⁻¹)	<i>In situ</i> direction (°)	Derived direction (°)
1.	19.05	85.47	6	9.5	195	210
2.	20.97	87.16	12	10.0	312	288
3.	20.02	87.21	10	12.0	71	84
4.	21.07	87.16	15	13.5	185	172
5.	20.83	87.21	15	13.6	60	65
6.	20.97	87.26	16	15.9	73	75
7.	21.07	87.26	16	17.5	217	216
8.	20.91	87.26	20	18.6	253	278
9.	20.97	87.31	23	21.9	45	45
10.	20.71	87.31	26	23.9	255	280
11.	20.91	87.31	22	23.9	330	338
12.	21.08	87.21	24	25.0	193	188
13.	20.96	87.21	28	28.2	50	47
14.	19.12	85.60	35	29.4	260	270
15.	20.66	87.28	29	32.6	200	205
16.	20.97	87.36	41	39.8	216	208
17.	20.02	87.36	46	48	178	181

tively up to 5 m depth during the IRS-P4 OCM pass time (around 12 noon) for each location

used in this study. The Global Positioning System (GPS) of the ship was used for the geographical location measurements, whose accuracy is within meters far within the threshold location accuracy of around 1 km for OCM standard data products. The pair of the images could be co-registered within an error limit of one pixel (here 360 meters). Table 1 shows the *in situ* current vectors (13th and 15th January, 2000 off Dhamra estuary, north Bay of Bengal) and the advective velocity vectors derived by maximum cross-correlation pattern matching method applied on sequential (January 13th and 15th, 2000) IRS-P4 OCM data. The coefficient of determination, R-squared is 0.99 for both magnitude (in cm s⁻¹) and direction (in deg.) (figure 4).

This study demonstrates the feasibility of applying the maximum cross-correlation method to sequential IRS-P4 OCM data in order to generate vector fields representing the transport velocity of optically visible near-surface tracers.

Acknowledgements

The authors express their sincere gratitude to Dr. A K S Gopalan, Director SAC and Dr. R R Navalgund, presently, Director, NRSA, Hyderabad and earlier Deputy Director, RESA, SAC for their guidance and valuable suggestions during the course of this study. They are also thankful to Dr. N Sengupta, the then Deputy Director General, Marine Wing, Geological Survey of India for providing the opportunity to collect sea truth data during R.V. Samudra Kaustubh Cruise

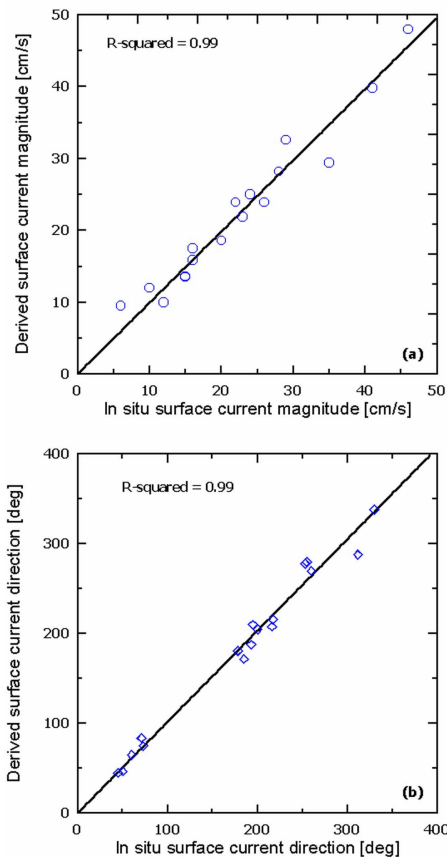


Figure 4. A plot of *in situ* surface current magnitudes vs the derived current magnitudes (a) and a plot of *in situ* surface current directions vs the derived surface current directions (b).

ST-133. Thanks are also due to the two anonymous reviewers for their constructive comments which have greatly improved the presentation of this work.

References

- Chauhan P, Nagur C R C, Mohan M, Nayak S R and Navalgund R R 2001 Surface chlorophyll-*a* distribution in the Arabian Sea and Bay of Bengal using IRS-P4 Ocean Colour Monitor satellite data; *Current Science* **80** 2 127–129
- Chauhan, P. 2002 Personal Communication.
- Emery W J, Thomas A C, Collins M J, Crawford W R and Mackas D L 1986 An objective method for computing advective surface velocities from sequential infrared satellite images; *J. Geophys. Res.* **91** C11 12865–12878
- Emery W J and Ikeda M 1984 A comparison of geometric correction methods for AVHRR imagery; *Can. J. Remote Sensing* **10**, 46–56
- Gao J and Lythe M B 1998 Effectiveness of the MCC method in detecting oceanic circulation patterns at a local scale from sequential AVHRR images; *Photogrammetric Engineering & Remote Sensing* **64** 4 301–308
- Garcia C A E and Robinson I S 1989 Sea surface velocities in shallow seas extracted from sequential Coastal Zone Colour Scanner Satellite Data, *J. Geophys. Res.* **94** C9 12681–12691
- Gordon H R and Clark D K 1981 Clear water radiances for atmospheric correction of Coastal Zone Color Scanner imagery, *Appl. Optics* **20** 4175–4180
- Kamachi M 1989 Advective surface velocities derived from sequential images for rotational flow field: Limitations and applications of Maximum Cross Correlation method with rotational registration, *J. Geophys. Res.* **94** C12 18227–18233
- Kelly K A 1989 An inverse model for near-surface velocity from infrared images; *J. Physical Oceanography* **19** 550–565
- Kreyszig, Erwin 1970 *Introductory Mathematical Statistics: Principles and Methods*, (New York: John Wiley)
- La Violette P E 1984 The advection of submesoscale thermal features in the Alboran sea gyro; *J. Physical Oceanography* **14** 550–565
- Leese J A, Novak C S and Clarke B B 1971 An automated technique for obtaining cloud motion from geosynchronous satellite data using cross-correlation; *J. Appl. Meteorol.* **10** 110–132
- Legeckis R and Pitchard J 1976 Algorithm for correcting the AVHRR imagery for geometric distortions due to the Earth curvature, Earth rotation and spacecraft roll attitude errors; *NOAA Tech. Memo. NESS* **77**
- Mohan M, Chauhan P, Mathur A and Dwivedi R M 1998 Atmospheric correction of MOS-B data using long wavelength and PCI approaches: IRS-P3 MOS validation experiment: Ocean Applications, *SAC Report No. SAC/RESA/MWRD/IRSP3/SN/02/98*, pp. 14–22
- Ninnis R M, Emery W J and Collins M J 1986 Automated extraction of pack ice motion from advanced very high resolution radiometer imagery, *J. Geophys. Res.* **91** 10725–10734
- SAC Technical Report 2000 Test and evaluation report on IRS-P4 OCM special product generation software, *Report No. IRS-P4/SAC/RESA/MWRD/TR/12/2000*, p. 29
- Tassan S 1994 Local algorithm using SeaWiFS data for retrieval of phytoplankton pigment, suspended sediments and yellow substance in coastal waters; *Appl. Opt.* **12** 2369–2378
- Vastano A C and Borders S E 1984 Sea surface motion over an anticyclonic eddy on the Oyashio Front; *Remote Sensing Environment* **16** 87–90
- Wu Q X, Pariman D, McNeil S J and Barnes E J 1992 Computing advective velocities from satellite images of sea surface temperature; *IEEE Transactions On Geoscience and Remote Sensing* **30** 1 pp. 166–175